

# AKINROBOTICS

## Product Catalog



# ABOUT OUR FACTORY

AKINROBOTICS, the world's first humanoid robot factory, is a private sector enterprise in the field of robotic technologies, established with the own capital of AKINSOFT, Turkey's largest software company.

Robots produced under the roof of AKINROBOTICS are designed and prepared with AKINROBOTICS' own capital and the R&D studies of the engineers it employs. With its highly equipped staff, AKINROBOTICS manufactures all of the robots it develops without being dependent on foreign companies.

With an 11,000 m<sup>2</sup> robotic application area and a 3,800 m<sup>2</sup> closed working area, AKINROBOTICS is the first Humanoid Robot Factory that makes mass production with a team of expert engineers and technicians.

AKINROBOTICS has started its activities by adopting a superior service quality understanding in order to increase the interest of Turkish people in science, developing technology and scientific thinking and at the same time to move our country to the first place with the studies carried out in the field of robotic technologies.

Aiming to serve humanity and science, AKINROBOTICS aims to increase the quality of people's social life and enable them to work in more qualified jobs by uploading monotonous jobs that are contrary to human ergonomics and endanger life to robots.

AKINROBOTICS, as a private sector enterprise established with its own capital, continues its way rapidly in this success story.

Since the first day of its establishment, every vision has been fulfilled and finally, in 2023, the Artificial Intelligence and Robotics Technologies Master's Program was opened in cooperation with AKINROBOTICS and BAHCESEHIR UNIVERSITY.

By signing the technology cooperation protocol between Medicana Education Group MBA Schools and AKINROBOTICS, Social Robot Mini ADAs started their education life as honorary students at MBA Schools.

Turkey's first "Academic Artificial Intelligence and Robotics Scholarship" was realized in partnership with AKINROBOTICS and Halic University. Artificial Intelligence and Robotics R&D Center will offer students career opportunities in Turkey with internship and certificate programs.

Within the scope of the AKINROBOTICS-Bilgi University collaboration, a University-Industry Project on Artificial Intelligence and Robotic Systems has been launched.

A photograph of the exterior of the AKINROBOTICS factory building. The building is modern with large windows and a prominent logo that reads "AKIN ROBOTICS". There are some trees in front of the building.

## AKIN ROBOTICS

# DESCRIPTION

## SOCIAL ROBOTS

ADA-7	1
MINI ADA	3

## SERVICE ROBOTS

SERVICE ROBOT V3	5
FACTORY SERVICE ROBOT	7
UV-C STERILIZATION ROBOT	9

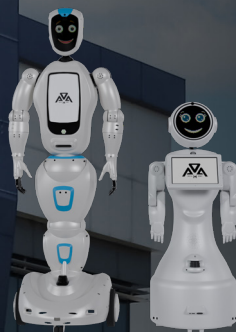
## INDUSTRIAL ROBOTS

AMR	11
ROBOT ARM	13

## QUADRUPED ROBOT

ARAT	15
------	----

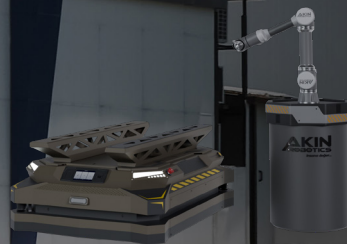
## SOCIAL ROBOTS



## SERVICE ROBOTS



## INDUSTRIAL ROBOTS



## QUADRUPED ROBOT





# SOCIAL ROBOT ADA 7

## FEATURES

- 01 **WEIGHT**  
65 kg
- 02 **DIMENSIONS**  
60 x 60 x 166 cm
- 03 **BATTERY**  
Lithium Ion
- 04 **MAXIMUM SPEED**  
0,6 m/s
- 05 **SCREEN**  
10.1 Inch
- 06 **AUTONOMOUS CHARGING**  
Available
- 07 **SPEECH LANGUAGE**  
Turkish - English - Russian  
Arabic - German - Spanish  
Polish - Dutch - French

## AREAS OF USE

- **EDUCATION SECTOR**
- **ADVERTISING AND PUBLISHING SECTOR**
- **TOURISM SECTOR**
- **FOOD AND BEVERAGE SECTOR**
- **ENTERTAINMENT INDUSTRY**
- **HEALTH SERVICES SECTOR**





# ADA 7 ABILITIES

## SEE & RECOGNIZE

It performs vision and human recognition through a camera located in the head area.

## DYNAMIC EXPRESSION & VIDEO

It has a high-resolution dynamic led face, and dynamic expressions and videos can be played on the robot's face screen.

## SPEECH & VOICE DETECTION

With the microphone on it, it can translate the questions and orders coming from outside into "speech to text" and transmit the answers created with artificial intelligence to the user in 8 different languages via voice.

## MOBILITY

Thanks to the wheel mechanism, it can move at a speed of 0.6 m/s by rotating 360 degrees freely. With its 4-axis arm structure, it can flexibly perform all humanoid arm movements.

## LOVE SENSOR

It responds to tactile interaction thanks to the affection sensor located in the head area.

## AUTONOMOUS NAVIGATION

Thanks to its impact and fall sensors, it recognizes obstacles around it and directs its movement. It provides autonomous navigation thanks to its lidars and depth camera.

## TOUCH SCREEN

Through the 10.1 inch touch screen integrated into its body, it can interact with people and present relevant content such as text, pictures, photos and videos. It provides easy access to product information, directions and payment information.

## BOSS MOBILE

With the boss robot application, online calls can be made between the robot and the remote user.

## ACCESSIBILITY

Remote control can be provided with ArMobil application. Programmable with AR-GUI.

# SOCIAL ROBOT MINI ADA

## FEATURES

- 01 **WEIGHT**  
45 kg
- 02 **DIMENSIONS**  
46 x 46 x 123 cm
- 03 **BATTERY**  
Lithium Ion
- 04 **MAXIMUM SPEED**  
0,6 m/s
- 05 **SCREEN**  
10.1 Inch
- 06 **AUTONOMOUS CHARGING**  
Available
- 07 **SPEECH LANGUAGE**  
Turkish - English - Russian  
Arabic - German - Spanish  
Polish - Dutch - French

## AREAS OF USE

- **EDUCATION SECTOR**
- **ADVERTISING AND PUBLISHING SECTOR**
- **TOURISM SECTOR**
- **FOOD AND BEVERAGE SECTOR**
- **ENTERTAINMENT INDUSTRY**
- **HEALTH SERVICES SECTOR**



# MINI ADA

## ABILITIES

### SEE & RECOGNIZE

It performs vision and human recognition through a camera located in the head area.

### AUTONOMOUS NAVIGATION

Thanks to its impact and fall sensors, it recognizes obstacles around it and directs its movement. It provides autonomous navigation thanks to its lidars and depth camera.

### MOBILITY

Thanks to the wheel mechanism, it can rotate 360 degrees freely and move at a speed of 0.6 m/s. With its 3-axis arm structure, it can move flexibly upwards, downwards, sideways and backwards.

### SPEECH & VOICE RECOGNITION

With the microphone on it, it can translate the questions and orders coming from outside into "speech to text" and transmit the answers created with artificial intelligence to the user in 8 different languages via voice.

### LOVE SENSOR

It responds to tactile interaction thanks to the affection sensor located in the head area.

### DYNAMIC EXPRESSION & VIDEO

It has a high-resolution dynamic led face, and dynamic expressions and videos can be played on the robot's face screen.

### ACCESSIBILITY

Remote control can be provided with ArMobil application. Programmable with AR-GUI.

### BARCODE READING

It can be integrated into barcode reading systems with the barcode reading sensor on it.

### TOUCH SCREEN

Through the 10.1 inch touch screen integrated into its body, it can interact with people and present relevant content such as text, pictures, photos and videos. It provides easy access to product information, directions and payment information.



# SERVICE ROBOT

## SERVICE ROBOT V3

### FEATURES

- 01 **WEIGHT**  
43 kg
- 02 **DIMENSIONS**  
60 X 50 x 146 cm
- 03 **BATTERY**  
Lithium Ion
- 04 **MAXIMUM SPEED**  
1,0 m/s
- 05 **SCREEN**  
10,1 Inch
- 06 **AUTONOMOUS CHARGING**  
Available
- 07 **NUMBER OF SHELVES / SIZE**  
3 shelves / 30 cm (Diameter)

### AREAS OF USE

- **HOTELS**
- **BAKERY**
- **HOSPITALS**
- **EVENTS**
- **CAFES**
- **RESTAURANTS**



# SERVICE ROBOT V3

## ABILITIES

### AUTONOMOUS TRAVEL

With the autonomous navigation feature, you can program it to navigate and work on its own without hitting obstacles.

### ASSIGNMENT

You can have it serviced via the interface screen.

### QRMENU

With QrMenu integration, the robot can take orders from customers.

### WOLVOX

With Wolvox Restaurant integration, you can deliver your orders with a robot.

### FUNCTIONALITY

It has the ability to serve tea, coffee and food to your staff and guests. In addition, the robot can carry your documents, documents and files between units.

### AUTONOMOUS CHARGING

Our robot plans its work according to the current charge/power balance. It decides that it needs to charge according to the set charge percentage.

### HYGIENE

Its easy-to-clean surface allows you to provide a more hygienic service.

### VOICE NOTIFICATION

Can give the specified sentences as a voice notification (For example: "Bon appetit", "Welcome", etc.).

### MAPPING

Our robot has the principle of autonomous operation with mapping system.

# SERVICE ROBOT

## FACTORY SERVICE ROBOT

### FEATURES

- 01 **WEIGHT**  
60 kg
- 02 **DIMENSIONS**  
47 x 62 x 123 cm
- 03 **BATTERY**  
Lithium Ion
- 04 **MAXIMUM SPEED**  
0,8 m/s
- 05 **SCREEN**  
10.1 Inch
- 06 **AUTONOMOUS CHARGING**  
Available
- 07 **NUMBER OF SHELVES / CARRYING CAPACITY**  
3 units / 15 kg

### AREAS OF USE

- **HOTELS**
- **HOSPITALS**
- **CAFES**
- **PRODUCTION LINES**
- **WAREHOUSES**
- **RESTAURANTS**





# FACTORY SERVICE ROBOT ABILITIES

## MAPPING

Our robot has the principle of autonomous operation with mapping system.

## AUTONOMOUS NAVIGATION

With the autonomous navigation feature, you can program it to navigate and work on its own without hitting obstacles.

## ASSIGNMENT

You can have it serviced via the interface screen.

## FUNCTIONALITY

In enterprises with lean production lines; documents, materials and products can be transported to the desired points.

## QRMENU

With QrMenu integration, the robot can take orders from customers.

## AUTONOMOUS CHARGING

Our robot plans its work according to the current charge/power balance. It decides that it needs to charge according to the set charge percentage.

## VOICE NOTIFICATION

Can give the specified sentences as a voice notification (For example: "Please take the materials on the shelf", "Welcome", etc.).

## WEIGHT DETERMINATION

Thanks to the shelf sensor, it checks whether there is a product on the shelf and warns when the weight of the product is over 15 kg.

## WOLVOX

With Wolvox Restaurant integration, you can deliver your orders with a robot.

# SERVICE ROBOT

## UV-C STERILIZATION ROBOT

### FEATURES

- 01 **WEIGHT**  
55 kg
- 02 **UV WAVELENGTH**  
254 nm(UV-C)
- 03 **UV FLORESAN**  
90 cm - 8 units
- 04 **UV AFFECT AREA**  
360°
- 05 **MAXIMUM SPEED**  
0,5 m/s
- 06 **VOICE NOTIFICATION LANGUAGES**  
Turkish, English
- 07 **STERILIZATION TIME**  
15 min (30 m2)

### AREAS OF USE

- **OFFICES**
- **EDUCATION INSTITUTIONS**
- **HOSPITALS**
- **SPORTS HALL**





# UV-C STERILIZATION ROBOT

## ABILITIES

### PLANNING

By planning the date and time, you can have sterilization outside your working hours without labor.

### AUTONOMOUS NAVIGATION

It has autonomous working principle with mapping system. With the autonomous navigation feature, you can program it to navigate and work on its own without hitting obstacles.

### STERILIZATION

Sterilization can destroy all bacterial and viral growth in the environment and provide about 7 days of sterile assurance.

### NOTICE

It eliminates potential risks to living beings with the features of sound and light warning before the operation, warning people in the environment and starting the operation with a countdown.

### SECURITY

When any movement is detected in the environment during operation, the system automatically turns off the UV-C lamps, and at the end of the operation, it terminates its duty with a sound and light warning system.

### AUTONOMOUS CHARGING

Our robot plans its work according to the current charge/power balance. If it calculates that it cannot finish sterilization in the closed area where it will navigate autonomously, it does not start sterilization. It first goes to the charging unit and gets charged, then continues sterilization.



# INDUSTRIAL ROBOT AMR ROBOT

## FEATURES

- 01 **WEIGHT**  
230 kg
- 02 **DIMENSIONS**  
38 x 82 x 110 cm
- 03 **CONTROL**  
AR Mobile, AR-GUI
- 04 **BATTERY TIME**  
30 hours
- 05 **MAXIMUM SPEED**  
0,7 m/s
- 06 **AUTONOMOUS CHARGING**  
Available
- 07 **CHARGING TIME**  
5 hours
- 08 **MAXIMUM LOAD WEIGHT**  
V500 - 500 kg  
V1000 - 1000 kg  
(2 different versions available)

## AREAS OF USE

- **WAREHOUSES**
- **PRODUCTION LINES**



# AMR ROBOT ABILITIES

## MAPPING

Our robot has the principle of autonomous operation with mapping system.

## AUTONOMOUS NAVIGATION

With the autonomous navigation feature, you can program it to navigate and work on its own without hitting obstacles.

## AUTONOMOUS CHARGING

Our robot plans its work according to the current charge/power balance. It decides that it needs to charge according to the set charge percentage.

## ASSIGNMENT PROCESS

You can make instant assignments with the wireless control feature.

## PALLETIZING

Developed to automate your in-warehouse pallet handling operations.

## LOAD TRANSPORTATION

It has a load carrying capacity of up to 1000 kg.

## DURABILITY

Manufactured with robust steel, aluminum and DKP sheet materials, the robot chassis offers durability for industrial environments.

## WARNING

Thanks to the weight sensor on it, the instant load is displayed on the interface and warns in case of overload and unbalanced loading.

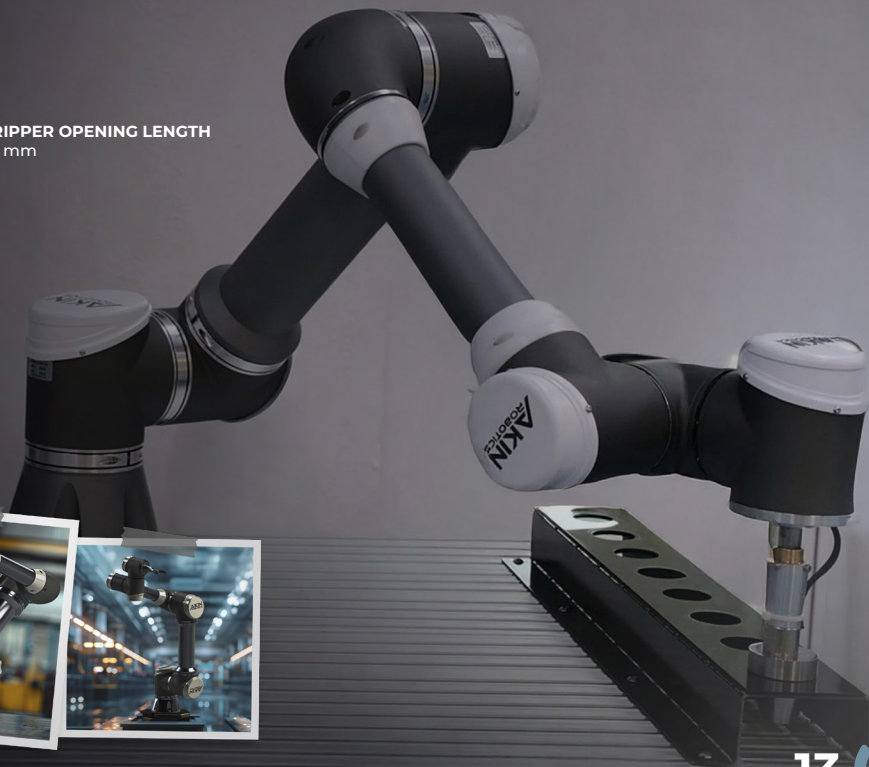
# INDUSTRIAL ROBOT ROBOT ARM

## FEATURES

- 01 **WEIGHT**  
27 kg
- 02 **CARRYING CAPACITY**  
5 kg
- 03 **PRODUCTION UNITS**  
1 unit
- 04 **CONTROL**  
AR Mobile, AR-GUI
- 05 **TRANSPORT MECHANISM**  
Gripper, Vacuum
- 06 **GRIPPER WEIGHT**  
950 gr
- 07 **GRIPPER OPENING LENGTH**  
85 mm

## AREAS OF USE

- **WAREHOUSES**
- **PRODUCTION LINES**





# ROBOT ARM ABILITIES

## GRIPPER

With its multi-purpose flexible mobility, it can pick up, drop, place and carry objects as desired.

## CONCEPT

Can grasp the object by wrapping it from the outside with adaptive grippers.  
Grasps flat and stacked pieces.  
Grasp different objects with End-Effector.

## VIRTUAL BARRIER

Thanks to the virtual barrier, the robot stops when a moving object enters the safe zone.

## PROGRAMMING

It can be programmed and controlled via AR-GUI without the need for engineering knowledge.

## TEACH PENDANT

Programmable with the Space Mouse assisted Teach Pendant.

## OBSTACLE DETECTION

It can perform tasks without hitting obstacles in the environment.

# QUADRUPEL ROBOT ARAT

## FEATURES

- 01 **WEIGHT**  
27 kg
- 02 **BATTERY**  
Lithium Ion
- 03 **CONTROL**  
AR Mobile, AR-GUI
- 04 **NUMBER OF JOINTS**  
12 units
- 05 **NUMBER OF SENSORS**  
67 units
- 06 **MAXIMUM LOAD**  
9 kg
- 07 **MAXIMUM SPEED**  
1,8 m/s

## AREAS OF USE

- **UNIVERSITY R&D ACTIVITIES**
- **SECURITY AND INDUSTRIAL ACTIVITIES**
- **Factories and Production Facilities**
- **SEARCH AND RESCUE ACTIVITIES**



# ARAT ABILITIES

## ACTIVE BALANCING

It can perform real-time kinematic calculation. It can walk on uneven terrain without falling with the improved Balance Preservation algorithm.

## ACCESSIBILITY

It can be used with wireless control feature. Programmable with AR-GUI.

## MOBILITY

It has a wide working angle providing flexible movement. It has 4 legs consisting of 3 joints.

## SEARCH AND RESCUE

It can carry an estimated load of 9 kilograms and can be used in search and rescue activities in the field.

## DISCOVERY

They can explore by walking, running and climbing steps.

## IMAGE PROCESSING

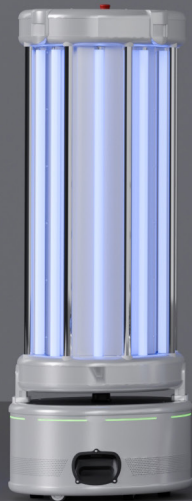
Thanks to its camera, it can perform image processing-based autonomous object tracking, simultaneous image transfer and dynamic obstacle avoidance strategy development.

## AUTONOMOUS NAVIGATION

It can perform mapping and autonomous missions with its Lidar sensor.



**UV-C  
Sterilization  
Robot**



**Arat**



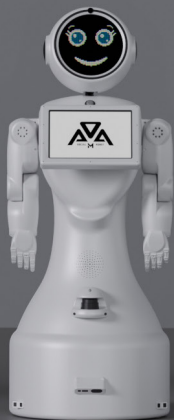
**Service  
Robot  
v3**



**Ada -7**



**Mini Ada**



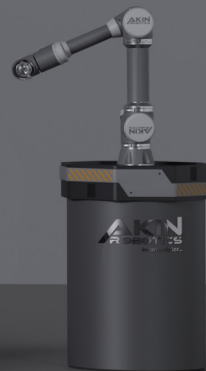
**Factory  
Service  
Robot**



**AMR**



**Robot  
Arm**



# EVENTS WE ATTENDED



## IKAF

February 20-21, 2025



## 68TH NATIONAL CONGRESS OF PEDIATRICS

November 20-22, 2024



## VOLTGO EVCHARGESHOW 2024

November 13-15, 2024



## 9TH TOURISM AND TECHNOLOGY DAY

October 4, 2024



## US3F FILM FESTIVAL

4 Ekim 2024



## TURKISH WORLD SCIENCE AWARDS

October 3, 2024



## BETA ENERGY TEKNOFEST

October 2-6, 2024



## MAKTEK EURASIA FAIR

September 30 - October 5, 2024



## AI TOMORROW 2024 SUMMIT

May 23-24, 2024



## ELEVEX KONYA FAIR

May 22-24, 2024



## TUBITAK

May 9, 2024



## FKK MINING TURKEY FAIR

May 2-4, 2024



## TBMM CHILDREN'S FESTIVAL

April 21, 2024



## PRODUCTIVITY AND TECHNOLOGY FAIR

February 8-10, 2024





# REFERENCES



Amerikan Kültür Kids  
Sivas



Marmara Eczanesi  
Yalova



Bilim Üsküdar  
İstanbul



Beykent Üniversitesi  
Hastanesi  
İstanbul



Gaziantep Fablab  
Gaziantep



Bilimsev Koleji  
İzmir



Yentek Model Tasarım  
Ankara



Teknik Robotik  
Ankara



Gaziantep Bilim  
Merkezi  
Gaziantep



İGA  
İstanbul



Karaköprü Belediyesi  
Şanlıurfa



Valeo  
Bursa



Yurtiçi Kargo  
İstanbul



Laren Hotels  
Antalya



Tad Koleji  
Balıkesir



Ateşçi Mühendislik  
Ankara



Zirve Net Bilgisayar  
Denizli



Karaca Home  
Sakarya



Yükseliş Koleji  
İskenderun



Şanlıurfa Belediyesi  
Şanlıurfa



Sobe Vakfı  
Konya



Mondi Home  
Ankara



Konya Tropikal  
Kelebek Bahçesi  
Konya



Başer Bilişim  
Antalya



Tekno Poligon  
İstanbul



Antalya  
Bilim Koleji  
Antalya



Tuba Jewelry  
İstanbul



Limak Deluxe Hotel  
Kıbrıs



Mucitler Akademisi  
İstanbul



İstanbul Robot Müzesi  
İstanbul



Daikin İlhan Klima  
Antalya



MBA Eğitim Kurumları  
İstanbul



Galaksi Sürücü  
Kursu  
Manisa



Tarih Teknoloji  
Koleji  
İstanbul



Akınsoft  
Konya



Doğal Yeşil  
Fırın  
Adana



Ottomania  
İstanbul



BayElektrosan  
Bayburt



BD Bilgisayar Dünyası  
İstanbul



Rami Kütüphanesi  
İstanbul



Cüneyt Demir Sigorta  
Sakarya



VIP Özel Eğitim  
Kursu  
Balıkesir



Necat Nasıroğlu Eğitim  
ve Kültür Vakfı  
Batman



Şehir Eczanesi Kepez  
Antalya



444 40 80 [www.akinrobotics.com](http://www.akinrobotics.com)      [akinrobotics](https://www.youtube.com/akinrobotics)